



DEVELOPING  
*Inspirational*  
CITIZENS  
FOR THE  
FUTURE

A valued member of the

**Brooke Weston Trust**





# Welcome to our school

This prospectus will provide you with all the information you need to know about Oakley Vale Primary School and what it has to offer your child.

We strive to ensure that all of our children enjoy their school experience, in an environment built on positive co-operation between themselves, parents, school staff and many sectors of the local community. The school is open to parents and carers at any time and we hope you take the opportunity to visit us and see our school at work. We aim to work in partnership with you, as a parent, to foster a love of learning and to enable your child to acquire the skills they need to achieve their full potential.

Tolerance and respect for others underpins every element of the work of our school and our school rules help ensure that our children stay happy and safe.

We look forward to welcoming your child to Oakley Vale Primary School.

Emma Goodwin,  
Principal



## Vision & Aims of the school

Our vision is to provide an outstanding educational experience for each and every child. We believe that all children are individuals and every single child has their own strengths that we help them to develop.

All of our children are valued within the school and all of their efforts are celebrated. This results in them growing into confident individuals who value their own worth and are well equipped for the next stage of their learning journey.



### Oakley Vale Primary School is a valued member of the Brooke Weston Trust

With nearly 30 years' experience of managing schools, the Trust's mission is 'to transform educational performance in the communities where we work through our long-term commitment to improve student achievement by removing the barriers to learning and providing opportunities for personal development.'

Every BWT school has its own unique character, but they all share a culture of high expectations and ambition for all.

Our schools are based in Northamptonshire and Cambridgeshire, all of which regularly collaborate with each other to drive towards this ambition. This means that staff and pupils from across BWT work together to support each other, share best practice and try new ideas.

Over each academic year there are many opportunities for pupils from all our schools to meet, compete and celebrate success together.





# Early Years Foundation Stage

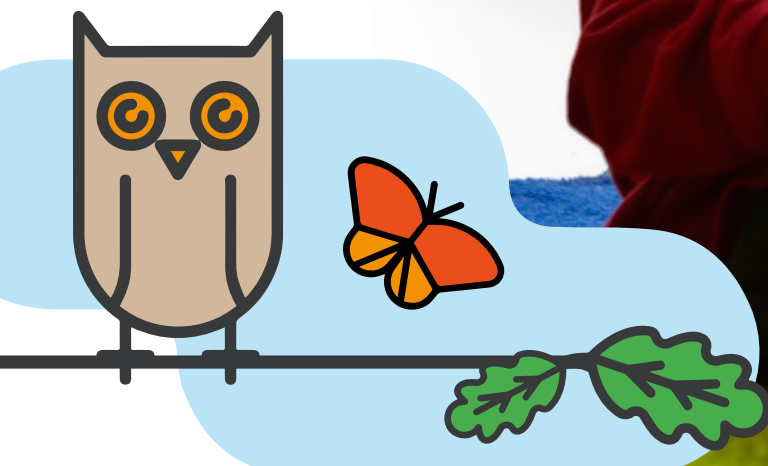
**Our Reception children follow 'The Early Years Foundation Stage Curriculum' which promotes their learning and development.**

The main aim of the Early Years Foundation Stage is to provide a firm foundation in learning which builds on their skills, attitudes and knowledge in seven vital areas:

- Personal
- Social and Emotional Development
- Physical Development
- Communication and Language
- Mathematics
- Literacy
- Understanding the World and Expressive Arts and Design

In Early Years, children learn and develop in different ways through challenging and playful opportunities. We note where each child is on their developmental pathway and how each individual learns best. We provide a learning environment, both in the classroom and outdoors, which stimulates learning and provides rich, playful experiences to build on their knowledge.

We develop strong partnerships with parents through regular, informative feedback on their learning through an electronic learning journey. We also make time for regular conversations, as well as open day events, as we know these support children's learning and development.



# Oakley Vale's Curriculum Intent

Our broad and balanced curriculum is at the core of our ambition for every child at Oakley Vale. It is designed to provide our children with a breadth of opportunities to access a wide range of learning experiences and to equip them with the knowledge, skills and understanding to make a positive contribution in return.

We aim to provide our children with an enriched, creative curriculum which encourages collaboration, instils a love of learning and helps carry them through to the next phase of their education **ready for any challenge they may face.**

Our curriculum is carefully crafted to ensure that subject coverage enables every child to make connections within and across areas of learning. We put reading and high-quality language rich literature at the heart of our school and central to the children's literacy development.

This approach is designed to foster citizens of the future who have the **Cultural Capital** and **Tickets for Life** in order to make a positive contribution within their community and the wider world.





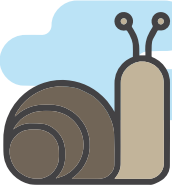


### English

Our English work is based on the National Curriculum, which develops the areas of reading, writing, speaking and listening and grammar. English skills are of paramount importance in our school and our main aim is to promote high standards of language and literacy by giving children a strong command of spoken and written language and to develop their love of literature through widespread reading for enjoyment.

To help achieve this, our children receive daily phonics teaching in reading in Y1 and Y2 and these phonic/spelling teaching strategies are continued in Key Stage 2. Children use a colour coded reading scheme that is closely matched to the phonic phases. The scheme progresses through every year group, giving children the opportunity to explore a wide range of texts.

To support our curriculum, high quality texts are chosen for each unit, which helps our children explore key themes. They have reading activities based on this text, capturing ideas through drama and conversation that develop their understanding, vocabulary and targets for further writing.



### Mathematics

The teaching of mathematics at Oakley Vale Primary School gives our children the ability to be confident and competent with problem-solving, calculation, numbers and measures. Quality time is given to each area of mathematics as we follow the mastery approach to ensure that all children consolidate, use and apply taught skills in a variety of different contexts.

Mathematics is taught in an exciting way at Oakley Vale Primary School and mathematical understanding is developed using concrete, pictorial and abstract (or symbolic) representations. Children use real objects to help them make sense of the concept or problem; this could be anything from real or plastic fruit, to straws, counters and cubes.

These objects can be moved, grouped and rearranged to illustrate a problem. As the child's experience and confidence grows they draw pictures that represent the problem. As understanding develops further, children progress to abstract representation which includes use of mathematical symbols. Our teachers help the children acquire proficiency and fluency in this subject by giving a sharp focus to the relevant aspects of the programmes of study for mathematics.



### Computing

Our Computing curriculum offers opportunities for children to develop Information Technology capability, including knowledge and understanding of the importance of information and how to select and prepare it.

We develop their skills in using hardware and software to manipulate information in problem solving, recording and developing programming skills. We encourage our children to explore their attitudes towards Information Technology and its value for themselves, for others and for society, giving them awareness of its advantages and limitations.



### Science

Our science curriculum covers life and living processes, physical processes and materials and their properties. Wherever possible the skills of enquiry, investigation and experiment are used and developed in this subject area and as much first-hand experience as possible is incorporated into their programmes of study.



**“Children are immersed in a range of hands-on experiences in which they connect, analyse and communicate with a range of data, gathered through field work”**



### History

This subject encourages the children to develop an interest in history both locally and beyond. We inspire curiosity and an awareness of the past through learning about all aspects of life in different periods, ranging from the Stone Age right up to modern history in the 1940s.

The curriculum is enriched through using a variety of sources of information and artefacts as children learn to describe and explain historical changes chronologically.



### Geography

The children are inspired to have a curiosity and fascination to find out about the world and its people. They will develop an interest in this subject through exploring physical and human geography, location and place knowledge, field work and maps.

Children are immersed in a range of hands-on experiences in which they connect, analyse and communicate with a range of data, gathered through field work, which deepens their understanding of geographical processes.



### Design and Technology

In their design and technology work children are encouraged to work with artefacts, systems and environments. They learn how to use tools safely and design and make things in a variety of media and for different purposes. During each Key Stage the children work on the following technological aspects; constructions, mechanisms, electrical devices, textiles and food.



### Religious Education (RE)

During Key Stage 1 children learn about festivals and places of worship in Christianity and at least one other world faith. They study stories from religious traditions, signs and symbols, artefacts and music. During Key Stage 2 they continue to learn about festivals and two other religions. They also study sacred writings and pilgrimages. Assemblies take place daily and focus on a range of themes.





**“During their time here, our children will experience a wide range of physical activities appropriate to their age, ability and interests”**



### Art and Design

The artwork completed at Oakley Vale Primary School is often linked to the children's topic work. During their time at school children have the opportunity to create two-dimensional work such as paintings, drawings and collages using skills including perspective and colour mixing.

They also have the opportunity to work in a variety of materials including clay, wood, card and plaster of Paris to make three-dimensional work. There are also opportunities at various stages throughout the school for all children to do needlework.



### Physical Education (PE)

All children have access to at least two hours of physical education per week. The curriculum has been designed to ensure all children have the physical, emotional and thinking skills required to achieve in PE, sport and life.

During their time here, our children will experience a wide range of physical activities appropriate to their age, ability and interests. Competitions take place throughout the year, both in and out of school, which encourage children to learn how to be part of a team, apply the conventions of fair play and honest competition and demonstrate good sporting behaviour.

PE and sport at Oakley Vale Primary School helps children to develop a growing self-awareness, positive attitude and commitment to self-improvement through setting goals, so that they are ultimately able to influence their own quality of life.



### Music

The school endeavours to give our children the chance to take part in a wide range of musical activities. These include the opportunity to play recorders and percussion instruments, appreciate music, sing, compose and participate in performances. The school has a choir, which performs for parents and takes part in local events and competitions. Children also have the opportunity to take part in woodwind instrumental lessons and guitar lessons, taught by a peripatetic teacher in school, by a separate 'fee paying' arrangement with the Northamptonshire Music and Performing Arts Trust.



### PSHCE (Personal, Social, Health and Citizenship Education)

The PSHCE curriculum is delivered using the Jigsaw scheme of work which covers all aspects of personal and social development as well as drugs, sex and relationship education.

## Behaviour

As a school we believe that there should be mutual respect between all members of our community. Adults should be role models for good behaviour and children should know and understand the consequences if their behaviour falls below the standard that we expect. Through our **House** teams and **Positive Behaviour** programme we ensure that children have opportunities to be rewarded for positive behaviour and to set an example to others throughout the school as a role model.

## Special Education

A great deal of care is taken to ensure that each child develops to his or her full potential and any learning or behavioural difficulties are supported. We make great efforts to include everyone in all our activities and learning, whatever their educational needs. Every child has full access to the curriculum and we use a variety of teaching styles and differentiation to ensure that all children can access learning in the classroom.

We also work very closely with parents who are kept fully informed with regular meetings and, if appropriate and with parental permission, we use the **Early Help Assessment (EHA)** to gain information to involve outside agencies. Our procedure for identifying, assessing and meeting Special Educational Needs is fully explained on our website.





# Parent Partnerships

We welcome parents and carers into school, believing we are partners in the education of your children. There are many opportunities for parents to become involved in the work of the school. Parents' time and expertise are greatly valued and can be used in many ways in school. Police checks and DBS checks are carried out on all adults helping in school.

If you are ever able to help, especially on a regular basis, please contact the Principal.

We have many events for parents during the school year. These include parents' consultation evenings, open days to find out more about the curriculum, sports, performing arts and musical events.

As a family-centred school, we have after-school activities through **Healthy Schools**, sports and art. We also have regular opportunities for children to share and perform their learning.

# Attendance

As a Brooke Weston Trust School, we expect good attendance to ensure all children are able to take full advantage of the education available to them.

Good attendance matters. Children who have good attendance:

- Get better jobs in the future
- Achieve better results
- Make better friendships
- Have good self-esteem and confidence


Good attendance means: 100% attendance where a child arrives on time every day that they are well.



## Attendance Awards

Awards are given for good attendance during and at the end of the year. These are valued by the children who appreciate their parents' support in qualifying for them. Parents can help their child reach their attendance awards through:

- Ensuring their child attends every day and is on time, in line with their legal obligations
- Only booking holidays in school holiday times and avoiding any fines
- Making dental appointments outside of school hours
- Notifying the school by 8:30am on the first day of any illness absence (the school will follow up any uninformed absence)



## Looking Smart

We have a simple school uniform. It consists of:

### Girls

- White blouse or polo shirt
- Grey skirt, pinafore or trousers
- School sweatshirt or a cardigan
- Green and white or red and white gingham dress
- Black school shoes (no trainers or open toed sandals)

### Boys

- White shirt or polo shirt
- Grey trousers
- School sweatshirt
- Grey shorts
- Black school shoes (no trainers)

All children are expected to be well presented for school.

### PE Kit

- Black shorts
- Green T-shirt with school logo
- Dark coloured tracksuit bottoms and jumper (outdoor PE only)
- Black plimsolls for Key Stage 1
- Trainers for Key Stage 2

### Outdoor Items

A coat or jacket should be brought into school every day (as well as a hat and gloves in the winter).

### Uniform is available from:

[www.yourschooluniform.com/schools/OakleyValeNN188RH](http://www.yourschooluniform.com/schools/OakleyValeNN188RH)



**Jewellery is not permitted to be worn at school**, with the exception of wrist watches and a single stud earring in each ear. Earrings **must** be removed for PE.

### Moving On

Children from Oakley Vale Primary School move on to a variety of secondary academies and schools including our Brooke Weston Trust family of secondary academies. We encourage parents and children to visit these to ensure they find the right provision for their child.

### Admissions

To apply for a place at Oakley Vale Primary School, please contact School Admissions at Northamptonshire County Council. You will find relevant forms and details of key dates to submit applications on their website.

### Further information

More details about Oakley Vale Primary School and the Brooke Weston Trust, including the most up-to-date information, can be found on our website [www.oakleyvaleprimary.org](http://www.oakleyvaleprimary.org) or the Trust website [www.brookewestontrust.org](http://www.brookewestontrust.org).





**Principal:** Emma Goodwin  
Cheltenham Road, Oakley Vale, Corby, Northants, NN18 8RH  
01536 461199  
[admin@oakleyvaleprimary.org](mailto:admin@oakleyvaleprimary.org)  
[www.oakleyvaleprimary.org](http://www.oakleyvaleprimary.org)



Follow us on  
[@OakleyValePri](https://twitter.com/OakleyValePri)



Find out more  
[www.oakleyvaleprimary.org](http://www.oakleyvaleprimary.org)



Follow us on  
[@BWTrust](https://twitter.com/BWTrust)