



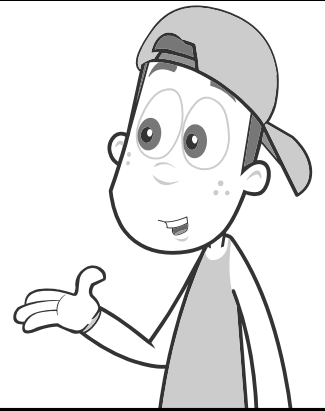
Name: \_\_\_\_\_ Class: \_\_\_\_\_

**Statement** - A statement tells us something.

**Question** - A question asks something.  
A question ends with a question mark.

**Exclamation** - An exclamation starts with 'What' or 'How' and includes a subject and a verb.  
An exclamation ends with an exclamation mark.

**Command** - A command tells someone to do something.



Write three **statements** about dogs. Use the example to help you.

Dogs need to be given fresh water every day.

1

2

Accept all reasonable responses

3

Write three **questions** about dogs. Use the example to help you.

How often should a dog be taken to the vets?

1

2

Accept all reasonable responses

3

Write three **exclamations** about dogs. Use the example to help you.

What a fluffy dog he is!

1

2

Accept all reasonable responses

3

Write three **commands** for the dog. Use the example to help you.

Roll over.

1

2

Accept all reasonable responses

3