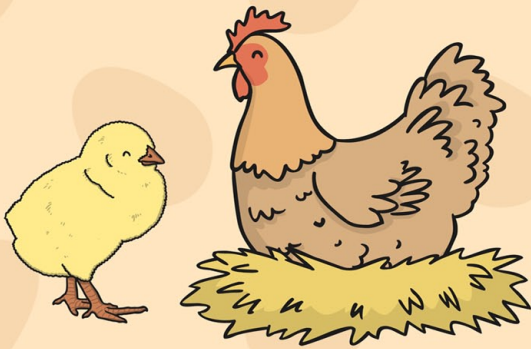


Subordinate Clauses

Subordinate clauses are clauses that tell us more about the main clause.

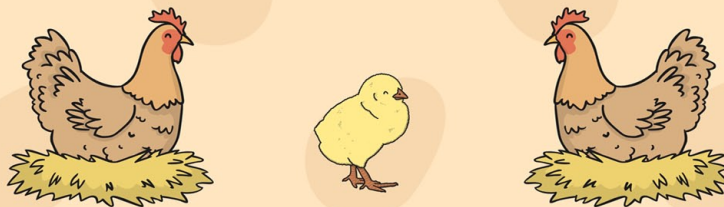
Subordinate clauses can go at the beginning, the middle or the end of a sentence.

Subordinate Clauses at the Beginning



subordinate clause + main clause
Sitting happily, the chicken laid eggs.

Subordinate Clauses in the Middle



main clause + subordinate clause + main clause
The chicken, who was busy laying eggs, sat happily.

Subordinate Clauses at the End

main clause + subordinate clause
The chicken laid eggs, sitting happily.

