

Word Families



Meet the Family

Look at the words around the Help family.
Can you sort them into groups? Decide how to group the words together.

helper

helpful

helpless

unhelpful

helping

The Help Family

help

helped



Meet the Family

How did you group the words?
One way could be...

Root Word

help

Prefix before the root

unhelpful

Suffix after the root

helper

helping

helped

helpful

Helpless



Meet the Family

Here is another word family, the Write family.
Can you sort these words into groups also?

writer

write

written

writing

underwrite

rewrite

writes

The Write Family



Meet the Family

How did you sort the 'write' family words?

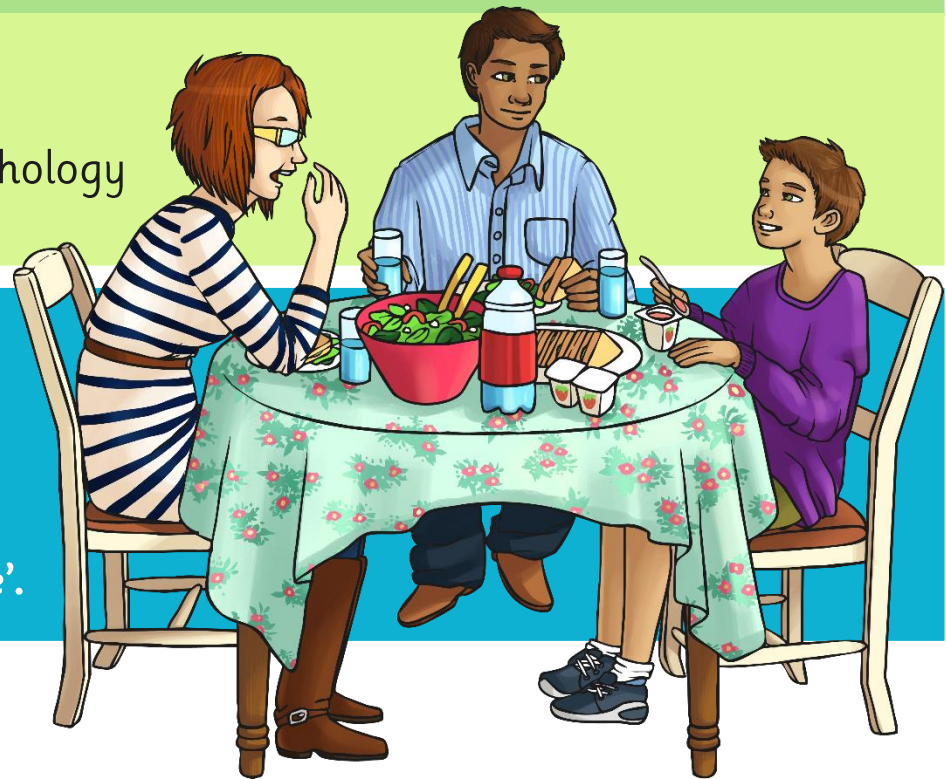
What are word families?

Word families are groups of words that link together through their meaning, grammar or morphology (roots, prefixes and suffixes).

These words...

rewrite **written** **underwrite**

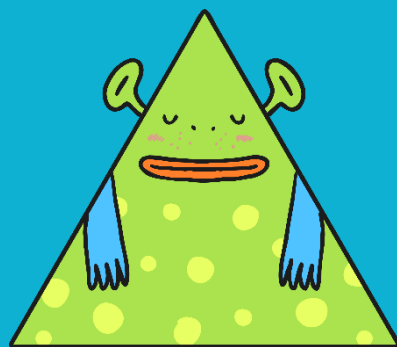
...all come from the root 'write'.



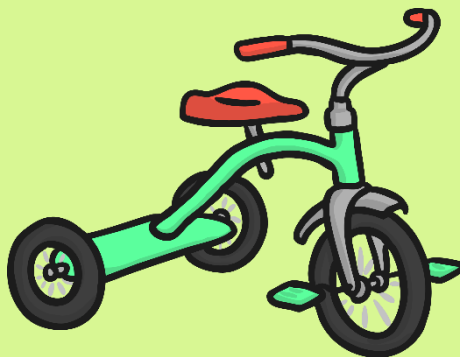
Meet the Family

These words...

triangle



tricycle



tripod



...all come from the root 'tri', which means three in Latin.

Can you see why these words might need a 'three' in them?

This is a partial root word, because it does not make sense in English on its own, but it is a Latin root word.



Meet the Family

Word Families

Word families sometimes use prefixes and suffixes or change spelling in the word family.

re**write**

written

under**write**

